



# Gabelli School of Business Freshman Advising Program Fourth Fall Large Group Meeting

Greer Jason-DiBartolo, Ph.D.

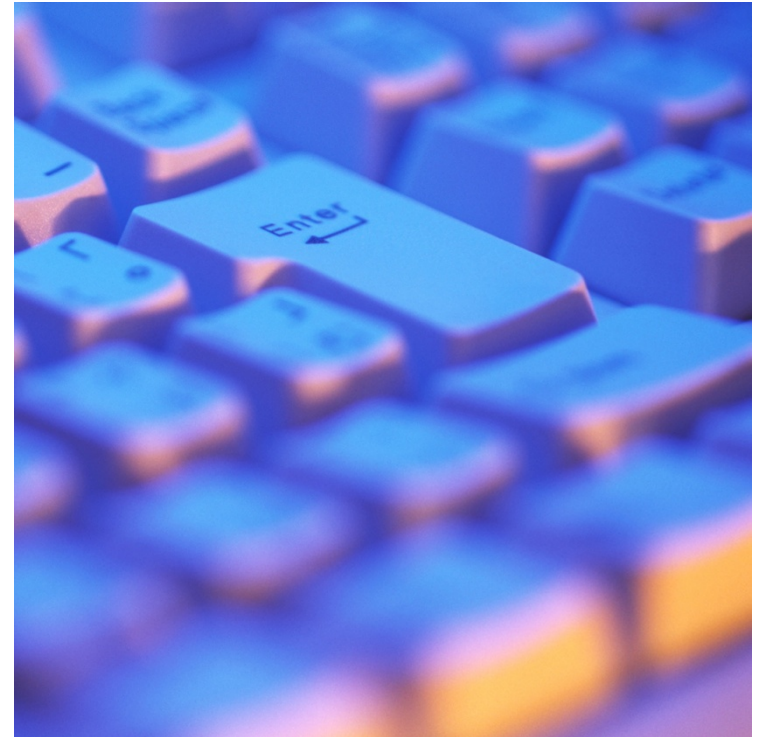
Assistant Dean and Advisor for Freshmen

Monday, November 3, 2014



# Today's Topics

- ILC-GB
- Global Awareness
- Advising Reminders
  - Spring 2015 Registration
  - Resource Reminders
  - Freshman Advising Dates





# Integrated Learning Community for (Global) Business (ILC-GB)

Dean Steven Najdzionek,  
Assistant Dean for Transfer Students and New Programs



O'Hare Hall

“Building Global Business Leaders”

FORDHAM  
NYC

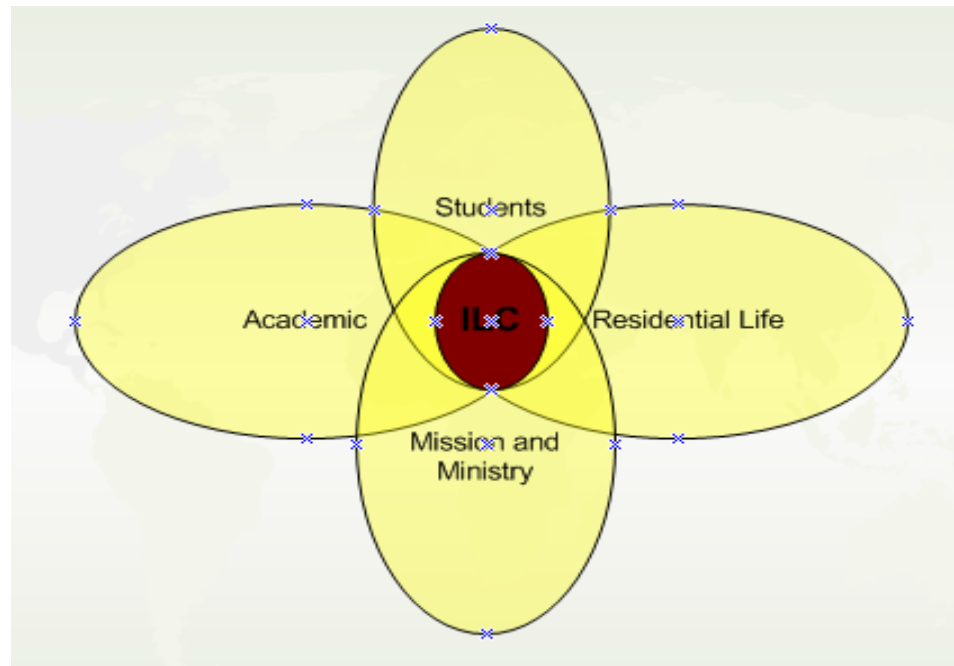
GABELLI  
SCHOOL of BUSINESS



# Foundation and Purpose (Goals)

Joint initiative between:

- Gabelli School of Business (GSB)
- Office of Residential Life (ORL)
- Mission & Ministry
- GSB Students





# Programs and Components

## Unique and Special Aspects



- A Community within a Community
  - Fosters deeper and more meaningful networks, relationships, and friendships
  - Fosters a business centered model for living and learning
- Dedicated RA
  - Focused on community building, program development, and the overall living and learning experience
  - Group outings to GSB sponsored events
  - Fosters greater communication and dissemination of business related information
- Dedicated wing and technology enhanced lounge/classroom
- GSB events that are exclusively for ILC-GB Program Students.



# Program Structure

**Program is designed for residential students from:**

- **GSB Sophomores**
- **FCRH Sophomores minoring in Business.**

**1 year commitment**

**Active participation in:**

- Personal & Professional Development workshops and activities - Fall
- Global Business - Spring
  - Lectures
  - Networking events
  - Corporate Visits
  - Student presentations
  - Community Service



# Application

**ILC Info Sessions - Late January/Early February**

**Applications due – Early to mid February**

**(prior to the regular ResLife Lottery)**





# Global Awareness:

## Why develop a global perspective?

- Changing nature of the world – “global” is becoming part of our everyday local lives
  - Socially through the mass media, telecommunications, and information and computer technologies;
  - Culturally through migration and relocation of people;
  - Economically through international trade, finance, and monetary economics;
  - Environmentally through shared natural resources and issues of sustainability;
  - Politically through international regulations, foreign affairs, and systems of regulation (including business).





# Global Awareness:

## Why develop a global perspective?

- Changing nature of the world – “global” has impacted higher education:
  - Increased demand for university graduates who are globally aware and interculturally competent;
  - Increased transnational mobility of students and staff;
  - Increased global interdependency in terms of political, environmental, and social problems/issues;
  - Greater opportunities for cross-cultural exchanges and establishment of learning, research and social networks with communities around the world.



# Global Awareness: Role Play Exercise

Welcome Yael Nitkin-Kaner and Elizabeth Clark  
from Counseling and Psychological Services.



# Global Awareness: Role Play Exercise

- As you observe these role plays, think about:
  - How you feel watching the role plays
  - What would you do if you were in this situation
  - How you could help someone else facing these circumstances



# Spring Registration Reminders

- Should register for courses that fulfill Liberal Arts Requirements, the Ground Floor, and Foreign Language (if you choose); Guidelines were provided in last advising session
  - Last advising powerpoint available at: <http://www.gabelliconnect.com/freshman-advising>
  - 7 required courses prior to SO Year: **Calculus, Finite Math, Composition II, Ground Floor, Macroeconomics, Microeconomics, Statistics I (ECON 2140)**
  - Other course selections should be discussed with me *prior* to registration
  - **Only Rose Hill Classes (“R” sections)**; No “L” Lincoln Center (except LC Japanese/Russian), “E” Evening (except Ground Floor), or “C” School of Professional and Continuing Studies Courses.
- Registration Dates
  - Friday, November 14, 2014: Students who have earned 27+ credits.
  - Tuesday, November 18, 2014: Students who have earned 0-26 credits.
  - Note: Some students have been approved for early registration
- Check to ensure you do not have a HOLD on your account ASAP and REGULARLY
- Have plenty of back-up classes ready!
- When looking up classes, do NOT enter the Course Title!



# Fair Trade

- Fair Trade classes are still an option for spring 2015! Feel free to register yourself for one of the following:
  - Fair Trade & Microfinance\* W 6:30-9:15pm CRN 25466
  - Spirituality & Fair Trade T 6:30-9:15pm CRN 25468
  - Entrepreneurship & Fair Trade\* M 6:30-9:15pm CRN 25470
- Okay to select these even though section number starts with “E” and not “R”
- Take this instead of History/Fine Art/Philosophy/Theology – can take those later
- Will count towards a Business Elective
- Classes with \* will also count towards an Entrepreneurship Concentration or a Management Concentration; all count towards Sustainability minor



# Having Trouble?

- May be a FCRH only course for their core curriculum (Eloquentia Perfecta); can only take English 2000 Eloquentia Perfecta 2 class
- Reserve Closed: Looks open, but may have spots reserved for FCRH students
- May not be eligible due to other reasons (pre-requisites, etc.)
- May have reached your credit limit: **17**
  - If you think you will be registering for more than 17 credits, you must see me **PRIOR** to registration
- Don't wait – register for a different course/section – better to register and drop than not register at all
  - Come to see me for help – if I can help, you can always drop the other class
- If an IT problem, contact the Help Desk at 718-817-3999 or [helpit@fordham.edu](mailto:helpit@fordham.edu)
- You may be “locked out” of registration due to the number of students registering simultaneously; just keep trying
- Some students experience trouble with their computers; consider trying a computer lab
- Make sure **ALL** of your additional credits have transferred **BEFORE** registration
- You may not be able to register for upperlevel (3000+) classes – see me **ASAP** for help



# Still Have Registration Questions?

- After November 8<sup>th</sup>:
  - Come see me as a walk-in during my walk-in times (see Gabelli Access)
  - Schedule and appointment on Gabelli Access
- See me on Registration Day, November 18<sup>th</sup>
  - Stop in anytime – only walk-ins all day the 18<sup>th</sup> and the afternoon of the 19<sup>th</sup>





## Academic Concerns

- If you want to drop a class, you must come to see me by November 7<sup>th</sup> **IN PERSON**
  - Be sure to speak to your professor first!
  - Appointments Tuesday and Thursday
  - Walk-ins Wednesday 11/5 1:00pm-2:00pm
  - Walk-ins Friday 11/7 10:00am-12:00pm, 1:00-2:00pm, and 3:30-4:30pm
- If you received an email from me requiring you to meet with me due to academic concerns, see your email for details and see me **ASAP!**



# Tutoring/Academic Support

- **GSB STUDY CENTER: BUSINESS**
  - Tutoring is provided for Math, Economics, and many other Business courses Monday-Thursday 9am-7pm and Friday 9am-5pm in 207 Hughes Hall. Sign-up on Gabelli Access.
- **THE WRITING CENTER**
  - Tutors address logical, rhetorical, and grammatical concerns in your writing. The Writing Center can assist with any type of writing, from conception, to composition, to completion. Monday through Thursday 9:00 am-8:00 pm; Fridays 10:00am-3:00pm on the East side of Dealy Hall's 5th floor, in the Economics Dept. Students can sign-up at [www.fordham.edu/writingcenter](http://www.fordham.edu/writingcenter) or by phone at 718-817-4032. Walk-ins are welcome whenever space is available. Students should be on time, bring the assignment, and expect to do work.
- **OFFICE OF DISABILITY SERVICES**
  - Accommodations for students with disabilities
  - Academic coaching for all students
- **COUNSELING & PSYCHOLOGICAL SERVICES and CAMPUS MINISTRY**
  - Assistance for students having difficulty adjusting to college
- **PHILOSOPHY**
  - Graduate students in the department can provide tutorial assistance. Students should contact Dr. Samir Haddad, the Associate Chair in Collins Hall 101 for tutorial referrals.
- **ECONOMICS**
  - Students can go to the Economics Tutoring Center in Dealy Hall E-533 or email [ecotutor@fordham.edu](mailto:ecotutor@fordham.edu) for an appointment.
- **MODERN LANGUAGES**
  - Free tutoring, practice, and conversation in all of the languages taught in the department is available. Contact the department for tutoring schedules. The Language Lab in Keating B25 also assists students with Modern Languages.
- **MATHEMATICS**
  - The Math Help Room is located in JMH 410. Math Room Hours: M- F 10:00-4:00. No appointment is necessary.
- **GABELLI DEANS/DIRECTORS**
  - Appointments and walk-ins
- **PROFESSORS**
  - Appointments and office hours



# Featured Upcoming Gabelli Events

- **Academic Skills Workshop**
  - Monday, 11/10, 1pm, Hughes 208
- **Common Good Internship Fair**
  - Wednesday, 11/5, 3-5pm, McGinley 2<sup>nd</sup> Floor
- **Film Fest**
  - *City Dump* Documentary with Sports Business Professor Conrad; Wednesday, 12/3, 2:30pm, Hughes Daleo B



# Have a great week!

See you at the next advising meeting on Thursday,  
November 20<sup>th</sup>!