



Gabelli School of Business Freshman Advising Program Fourth Fall Large Group Meeting

Greer Jason-DiBartolo, Ph.D.

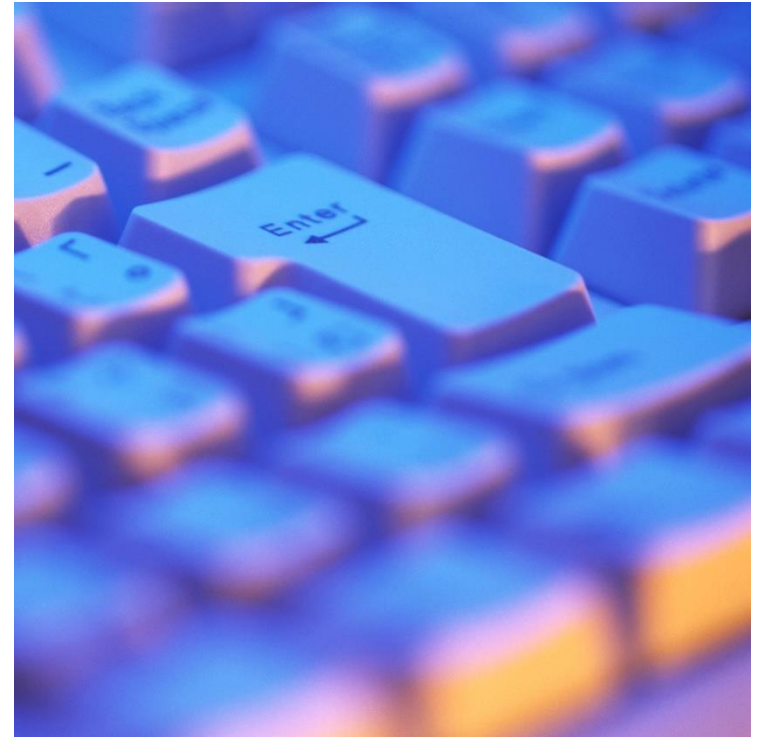
Assistant Dean and Advisor for Freshmen

Thursday, October 23, 2014



Today's Topics

- Service Learning
- Spring 2015 Registration
- Midterm Progress Reports
- Reminders
- Small Group Breakout





FORDHAM UNIVERSITY

THE JESUIT UNIVERSITY OF NEW YORK

Gabelli Service-Learning Program

Brian Dunn
Assistant Dean
The Gabelli School of Business

October 23, 2014





Gabelli Service-Learning Program

Connect in-class learning with business relevant volunteer opportunities

– Offered each semester





Requirements

- 30 Hours of community service (semester)
- 2 Reflective essays
- 1 Contextual seminar (Corporate Social Responsibility)





Benefits

- **To You:**
 - Connect with the local Bronx community
 - Develop/hone business relevant skills
 - 1.0 graded credit on transcript

- **To The Community:**
 - Committed volunteers throughout the semester





Partner Organizations

- Bronx School of Law & Finance
- The EDGE Program
- Fordham Road Business Improvement District
- Reading Partners
- Serviam Gardens
- Volunteer Income Tax Assistance Program (VITA)
- Yes The Bronx





How To Get Involved

- Look out for the Service-Learning email (beginning of each semester)
- Submit interest form
- Identify a Gabelli class and a volunteer opportunity to connect





Gabelli Tutoring

- **Economics:** Macroeconomics, Microeconomics
- **Math:** Math for Business: Finite, Math for Business: Calculus
- **Reservations: Gabelli Access**
- **Gabelli Study Center (Hughes, 207)**





FORDHAM UNIVERSITY

THE JESUIT UNIVERSITY OF NEW YORK

Brian Dunn

Assistant Dean

Hughes Hall, Room 300-A

bdunn@fordham.edu

718-817-5203





Your Spring Schedule

- You will register yourself for spring classes; they will not be selected for you like fall
- Registration will occur in November
- Should register for courses that fulfill Liberal Arts Requirements prior to sophomore year, the Ground Floor, and Foreign Language (if you choose); Guidelines are provided in this presentation
 - Other course selections should be discussed with me *prior* to registration



Core Curriculum Worksheet Review

GABELLI INTEGRATED CORE CURRICULUM WORKSHEET

Fulfill Most Liberal Arts Core Requirements during Freshman Year; fulfill some Liberal Arts Core Requirements during Sophomore/Junior Year

Take these Business Core Requirements during Sophomore Year

Take these Business Core Requirements during Junior/Senior Years

These requirements will get more specific after declaring major/minor/specializations, etc.; take most major/concentration classes Junior/Senior Years

LIBERAL ARTS CORE		
1	ENGL 1102	COMPOSITION II
2	ENGL 2000	TEXT & CONTEXT
3	PHIL 1000	PHILOSOPHY OF HUMAN NATURE
4	PHIL 3000	PHILOSOPHICAL ETHICS
5	THEO 1000	FAITH & CRITICAL REASONING
6	THEO 3 ___	SACRED TEXTS & TRAD CORE REQ
7	HIST _____	UNDERSTANDING HISTORICAL CHNGE: ____
8	MATH 1108	MATH FOR BUSINESS: FINITE
9	MATH 1109	MATH FOR BUSINESS: CALCULUS
10	ECON 1100	BASIC MACRO-ECONOMICS
11	ECON 1200	BASIC MICRO-ECONOMICS
12	ECON 2140	STATISTICS 1
13	_____	FINE ARTS CORE REQ
BUSINESS INTEGRATED CORE		
14	CBBU 1001	THE GROUND FLOOR
15	ACBU 2222	INTRO FINANCIAL ACCOUNTING
16	MKBU 3225	MARKETING PRINCIPLES
17	MGBU 2142	STATISTICAL DECISION MAKING
18	INSY 2299	INFORMATION SYSTEMS 1 (1.5 credits)
	CMBU 2664	BUSINESS COMMUNICATION 1 (1.5 credits)
19	MGBU 3222	MANAGEMENT 1 (1.5 credits)
	MGBU 4440	STRATEGY 1 (1.5 credits)
20	ACBU 2223	INTRO MANAGERIAL ACCOUNTING
21	FNBU 3221	FINANCIAL MANAGEMENT
22	INSY 2301	INFORMATION SYSTEMS 2 (1.5 credits)
	CMBU 2666	BUSINESS COMMUNICATION 2 (1.5 credits)
23	MGBU 3224	MANAGEMENT 2 (1.5 credits)
	MGBU 4442	STRATEGY 2 (1.5 credits)
24	MGBU 3438	OPERATIONS PRODUCTION MGMT
25	BLBU 3443	ETHICS IN BUSINESS
26	BLBU 2234	LEGAL FRAMEWORKS OF BUSINESS
CONCENTRATION COURSES		
27	_____	CONCENTRATION COURSE
28	_____	CONCENTRATION COURSE
29	_____	CONCENTRATION COURSE
30	_____	CONCENTRATION COURSE
LIBERAL ARTS ELECTIVES		
31	_____	ANY LIBERAL ARTS COURSE
32	_____	ANY LIBERAL ARTS COURSE
33	_____	ANY LIBERAL ARTS COURSE
34	_____	ANY LIBERAL ARTS COURSE
35	_____	ANY LIBERAL ARTS COURSE
36	_____	ANY LIBERAL ARTS COURSE
FREE ELECTIVES		
37	_____	ANY BUSINESS OR LIB ARTS COURSE
38	_____	ANY BUSINESS OR LIB ARTS COURSE
39	_____	ANY BUSINESS OR LIB ARTS COURSE
BUSINESS ELECTIVE		
40	_____	ANY BUSINESS ELECTIVE

NAME	
ID	
DEGREE: B.S.	
MAJOR: BUAD	
CON	
ADD C	
MINOR	
SPEC	
YR / SEM Expected Graduation	
courses completed	
Cumulative Grade Point Average (GPA)	
Completed "G" (global) Attribute	
IP - Sophomore Fall	
IP - Sophomore Spring	
IP - Junior Year	
IP - Senior year	

You won't declare your major until end Sophomore year

All Gabelli School Students must fulfill Globalism Requirement prior to Graduation; usually taken in major/concentration courses.

Ground Floor only Business Core Freshman Year

Some of you may have started to fulfill these liberal arts requirements:

- Foreign Language: can be used towards International Business Secondary Conc.
- AP/A-Level/IB Courses: can be used to satisfy a dropped class, becomes a Free Elective, gives flexibility abroad or SR year, or take one less class
- Pre-Calc, Comp I, & ESL
- Calculus 2: can be used towards Math Minor



Spring Courses

- 1: Ground Floor* OR Composition 2* OR *Composition 1* OR *ESL*
- 2: Finite Math* OR Calculus* OR *Calculus 2*
- 3: Basic Macroeconomics* OR Basic Microeconomics*
- 4: Statistics 1* OR History
- 5: Philosophy of Human Nature OR Faith and Critical Reasoning
OR *Foreign Language*
- 6: Freshman Advising – You will automatically be registered

Notes:

- *Indicates required course necessary before Sophomore Year Core Curriculum.
- Recommend you wait to take Fine Art requirement in case you go abroad; if you do not intend to go abroad, you can take as 5th course instead of History, Philosophy, Theology.
- Need to wait until you take Business Core Curriculum in Sophomore year before you begin major/concentration/specialization courses.



Sample Spring Courses

LIBERAL ARTS CORE			
ENGL	1102	COMPOSITION II	S15
ECON	1100	BASIC MACRO-ECONOMICS	S15
ECON	1200	BASIC MICRO-ECONOMICS	F14
MATH	1108	MATH FOR BUSINESS: FINITE	F14
MATH	1109	MATH FOR BUSINESS: CALCULUS	S15
PHIL	1000	PHILOSOPHY OF HUMAN NATURE	F14
THEO	1000	FAITH & CRITICAL REASONING	S15
HIST	1 ___	UNDRSTND HIST CHNGE:	F14
ECON	2150	STATISTICS 1	S15
----	----	FINE ARTS CORE REQ	
ENGL	2000	TEXT & CONTEXT	
PHIL	4000	PHILOSOPHICAL ETHICS	
THEO	4 ___	SACRED TEXTS & TRAD CORE REQ	
BUSINESS INTEGRATED CORE			
CBBU	1001	Ground Floor	F14
LIBERAL ARTS ELECTIVES			
----	----	ANY LIBERAL ARTS COURSE	
----	----	ANY LIBERAL ARTS COURSE	
----	----	ANY LIBERAL ARTS COURSE	
----	----	ANY LIBERAL ARTS COURSE	
----	----	ANY LIBERAL ARTS COURSE	
----	----	ANY LIBERAL ARTS COURSE	

- F15=Fall 2015; S15=Spring 2015
- Majority of Gabelli Freshmen take first 9 Liberal Arts Core Classes & Ground Floor.
 - Can take any HIST 1000-1800 or AFAM 1600.
- Classes may be switched:
 - If you are in Macroeconomics now, take Microeconomics in Spring
 - If you are in Theology 1000 now, take Philosophy 1000 in Spring
 - If you are in Composition II now, take Ground Floor in Spring
- Fine Art: if you do not plan to study abroad, you may take Fine Art course instead of History, Theology, or Philosophy (and take those courses later). Fine Art Options:
 - Art History, Music History, Intro to Opera, Intro to Theatre, Urbanism
- Many Exceptions:
 - Foreign Language
 - ESL or Composition 1
 - Pre-Calculus
 - Fair Trade
 - GBHP
- Note: Diagram illustrates just typical options.



Exceptions: Foreign Language

LIBERAL ARTS CORE			
ENGL	1102	COMPOSITION II	S15
ECON	1100	BASIC MACRO-ECONOMICS	S15
ECON	1200	BASIC MICRO-ECONOMICS	F14
MATH	1108	MATH FOR BUSINESS: FINITE	F14
MATH	1109	MATH FOR BUSINESS: CALCULUS	S15
PHIL	1000	PHILOSOPHY OF HUMAN NATURE	F14
THEO	1000	FAITH & CRITICAL REASONING	
HIST	1 ___	UNDERSTANDING HIST CHNGE:	
ECON	2150	STATISTICS 1	S15
----	----	FINE ARTS CORE REQ	
ENGL	2000	TEXT & CONTEXT	
PHIL	4000	PHILOSOPHICAL ETHICS	
THEO	4 ___	SACRED TEXTS & TRAD CORE REQ	
BUSINESS INTEGRATED CORE			
CBBU	1001	Ground Floor	F14
LIBERAL ARTS ELECTIVES			
FOREIGN LANG.		ANY LIBERAL ARTS COURSE	F14
FOREIGN LANG.		ANY LIBERAL ARTS COURSE	S15
----	----	ANY LIBERAL ARTS COURSE	
----	----	ANY LIBERAL ARTS COURSE	
----	----	ANY LIBERAL ARTS COURSE	
----	----	ANY LIBERAL ARTS COURSE	

- If you want to take a Foreign Language in Spring:
 - If in an Intro Foreign Language now worth 5 credits, proceed directly to Intermediate I (skip Intro 2 level).
 - If in a higher level, proceed to the next appropriate level.
 - If you DO want to continue taking a foreign language, then do NOT take Theology 1000 or Philosophy 1000 in Spring 2015 (you will take it in So, Jr, or Sr year); take:
 - Ground Floor or Composition II
 - Macroeconomics or Microeconomics
 - Finite or Calculus
 - Statistics 1
 - Foreign Language
 - If you have AP Credit for an Econ and/or Calculus, you can take the Foreign Language AND Theology 1000/Philosophy 1000 /History.
- If you took a language in Fall and do not want to continue, consider taking:
 - Ground Floor or Composition II
 - Macroeconomics or Microeconomics
 - Finite or Calculus
 - Statistics 1
 - Theology 1000 or Philosophy 1000 or History
- You are welcome to meet with me individually to create a Spring plan.



Exceptions: ESL

LIBERAL ARTS CORE				
ENGL	1102	COMPOSITION II		
ECON	1100	BASIC MACRO-ECONOMICS	S15	
ECON	1200	BASIC MICRO-ECONOMICS	F14	
MATH	1108	MATH FOR BUSINESS: FINITE	F14	
MATH	1109	MATH FOR BUSINESS: CALCULUS	S15	
PHIL	1000	PHILOSOPHY OF HUMAN NATURE		
THEO	1000	FAITH & CRITICAL REASONING		
HIST	1 _ _ _	UNDRSTND HIST CHNGE:	S15	
ECON	2150	STATISTICS 1	F14	
----	----	FINE ARTS CORE REQ	F14	
ENGL	2000	TEXT & CONTEXT		
PHIL	4000	PHILOSOPHICAL ETHICS		
THEO	4 _ _	SACRED TEXTS & TRAD CORE REQ		
BUSINESS INTEGRATED CORE				
CBBU	1001	Ground Floor	S15	
LIBERAL ARTS ELECTIVES				
ESL 1		ANY LIBERAL ARTS COURSE	F14	
ESL 2		ANY LIBERAL ARTS COURSE	S15	
COMP 1	----	ANY LIBERAL ARTS COURSE		
----	----	ANY LIBERAL ARTS COURSE		
----	----	ANY LIBERAL ARTS COURSE		
----	----	ANY LIBERAL ARTS COURSE		

- If in ESL now, will take ESL 2 in Spring AND Ground Floor.
 - Ground Floor
 - ESL 2
 - Macro or Micro
 - Calculus
 - History (Only if you have already taken Statistics 1 – if not, take Statistics 1)
- **I WILL REGISTER YOU FOR ESL 2; you do not need to register yourself.**
- **Your ESL 2 class will be MR 8:30-11:20am at RH; I will add this class to your schedule.**
 - **Tell me PRIOR to Friday, October 31st if you prefer take the course MR 8:30-11:20am at LC.**
- Following a review of Final Exams, ESL 2 course registration may change.
- Take Philosophy/Theology during a later semester.
- Must take Comp I/II in Spring Sophomore year.
 - Recommend take in Summer.
- **IF YOU WILL REGISTER FOR ABOVE 18 CREDITS, MUST GET PRIOR APPROVAL FROM ME.**
- Note: Diagram at left illustrates just one of many options: ESL 2 in Spring.
 - You are welcome to meet with me individually to create a Spring plan.



Exceptions: Composition I

LIBERAL ARTS CORE			
ENGL	1102	COMPOSITION II	S15
ECON	1100	BASIC MACRO-ECONOMICS	S15
ECON	1200	BASIC MICRO-ECONOMICS	F14
MATH	1108	MATH FOR BUSINESS: FINITE	F14
MATH	1109	MATH FOR BUSINESS: CALCULUS	S15
PHIL	1000	PHILOSOPHY OF HUMAN NATURE	F14
THEO	1000	FAITH & CRITICAL REASONING	
HIST	1 ___	UNDRSTND HIST CHNGE:	F14
ECON	2150	STATISTICS 1	S15
----	----	FINE ARTS CORE REQ	
ENGL	2000	TEXT & CONTEXT	
PHIL	4000	PHILOSOPHICAL ETHICS	
THEO	4 ___	SACRED TEXTS & TRAD CORE REQ	
BUSINESS INTEGRATED CORE			
CBBU	1001	Ground Floor	S15
LIBERAL ARTS ELECTIVES			
COMP 1	----	ANY LIBERAL ARTS COURSE	F14
----	----	ANY LIBERAL ARTS COURSE	
----	----	ANY LIBERAL ARTS COURSE	
----	----	ANY LIBERAL ARTS COURSE	
----	----	ANY LIBERAL ARTS COURSE	
----	----	ANY LIBERAL ARTS COURSE	

- If in Composition I now, will take Composition II AND Ground Floor Spring; take:
 - Ground Floor
 - Composition II
 - Macro or Micro
 - Calculus or Finite
 - Statistics 1
- Take Philosophy/Theology 1000 requirement during a later semester
- Note: Diagram at left illustrates just one of many options.
 - You are welcome to meet with me individually to create a Spring plan.



Exceptions: Pre-Calculus

LIBERAL ARTS CORE			
ENGL	1102	COMPOSITION II	S15
ECON	1100	BASIC MACRO-ECONOMICS	S15
ECON	1200	BASIC MICRO-ECONOMICS	F14
MATH	1108	MATH FOR BUSINESS: FINITE	S15
MATH	1109	MATH FOR BUSINESS: CALCULUS	summer
PHIL	1000	PHILOSOPHY OF HUMAN NATURE	F14
THEO	1000	FAITH & CRITICAL REASONING	S15
HIST	1 ___	UNDRSTND HIST CHNGE:	F14
ECON	2150	STATISTICS 1	S15
----	----	FINE ARTS CORE REQ	
ENGL	2000	TEXT & CONTEXT	
PHIL	4000	PHILOSOPHICAL ETHICS	
THEO	4 ___	SACRED TEXTS & TRAD CORE REQ	
BUSINESS INTEGRATED CORE			
CBBU	1001	Ground Floor	F14
LIBERAL ARTS ELECTIVES			
PRECALC	----	ANY LIBERAL ARTS COURSE	F14
----	----	ANY LIBERAL ARTS COURSE	
----	----	ANY LIBERAL ARTS COURSE	
----	----	ANY LIBERAL ARTS COURSE	
----	----	ANY LIBERAL ARTS COURSE	
----	----	ANY LIBERAL ARTS COURSE	

- If in Pre-Calc now, should take Finite Math Spring
 - Ground Floor or Composition II
 - Macro or Micro
 - Finite (recommended) or Calculus
 - Statistics 1
 - Philosophy/Theology
- STRONGLY RECOMMEND** but do not require taking Calculus in Summer 2015 to catch-up
 - Calculus easier to get pre-approved at an alternate school than Finite Math
 - If you do not take Calculus in summer 2015, **MUST** take spring 2016 (ONLY if you took Pre-Calculus).
- Note: Diagram at left illustrates just one of many options.
 - You are welcome to meet with me individually to create a Spring plan.



Exceptions: Pre-Calculus & Comp 1

LIBERAL ARTS CORE			
ENGL	1102	COMPOSITION II	S15
ECON	1100	BASIC MACRO-ECONOMICS	S15
ECON	1200	BASIC MICRO-ECONOMICS	F14
MATH	1108	MATH FOR BUSINESS: FINITE	S15
MATH	1109	MATH FOR BUSINESS: CALCULUS	summer
PHIL	1000	PHILOSOPHY OF HUMAN NATURE	F14
THEO	1000	FAITH & CRITICAL REASONING	
HIST	1 ___	UNDRSTND HIST CHNGE:	F14
ECON	2150	STATISTICS 1	S15
----	----	FINE ARTS CORE REQ	
ENGL	2000	TEXT & CONTEXT	
PHIL	4000	PHILOSOPHICAL ETHICS	
THEO	4 ___	SACRED TEXTS & TRAD CORE REQ	
BUSINESS INTEGRATED CORE			
CBBU	1001	Ground Floor	S15
LIBERAL ARTS ELECTIVES			
PRECALC	----	ANY LIBERAL ARTS COURSE	F14
COMP 1	----	ANY LIBERAL ARTS COURSE	F14
----	----	ANY LIBERAL ARTS COURSE	
----	----	ANY LIBERAL ARTS COURSE	
----	----	ANY LIBERAL ARTS COURSE	
----	----	ANY LIBERAL ARTS COURSE	

- If in Pre-Calc & Comp 1 now, will take Spring:
 - Ground Floor
 - Macro or Micro
 - Finite (recommended) or Calculus
 - Composition II
 - Statistics 1
- STRONGLY RECOMMEND taking Calculus in Summer to catch-up.
 - Calculus easier to get pre-approved at an alternate school than Finite Math.
 - If you do not take Calculus in summer 2015, MUST take spring 2016 (ONLY if you took Pre-Calculus).
- Take both Comp II and Ground Floor now; take Philosophy/Theology 1000 requirement(s) during a later semester
- Note: Diagram at left illustrates just one of many options.
 - You are welcome to meet with me individually to create a Spring plan.



Exceptions: Fair Trade

LIBERAL ARTS CORE			
ENGL	1102	COMPOSITION II	S15
ECON	1100	BASIC MACRO-ECONOMICS	S15
ECON	1200	BASIC MICRO-ECONOMICS	F14
MATH	1108	MATH FOR BUSINESS: FINITE	F14
MATH	1109	MATH FOR BUSINESS: CALCULUS	S15
PHIL	1000	PHILOSOPHY OF HUMAN NATURE	S15
THEO	1000	FAITH & CRITICAL REASONING	
HIST	1 ___	UNDERSTANDING HIST CHNGE:	
ECON	2150	STATISTICS 1	S15
----	----	FINE ARTS CORE REQ	
ENGL	2000	TEXT & CONTEXT	
PHIL	4000	PHILOSOPHICAL ETHICS	
THEO	4 ___	SACRED TEXTS & TRAD CORE REQ	
BUSINESS INTEGRATED CORE			
CBBU	1001	Ground Floor	F14
BUSINESS ELECTIVE			
40	__ Fair Trade __	ANY BUSINESS ELECTIVE	F14

- If you took Fair Trade in Fall, take:
 - Ground Floor or Composition II
 - Macroeconomics or Microeconomics
 - Finite or Calculus
 - Statistics 1
 - Philosophy or Theology or History or Foreign Language
- You are welcome to take Fair Trade in Spring 2015; you have three options:
 - Fair Trade & Microfinance W 6:30-9:15pm CRN 25466
 - Spirituality & Fair Trade T 6:30-9:15pm CRN 25468
 - Entrepreneurship & Fair Trade M 6:30-9:15pm CRN 25470
 - Ground Floor or Composition II
 - Macroeconomics or Microeconomics
 - Finite or Calculus
 - Statistics 1
 - Fair Trade
- You are welcome to meet with me individually to create a Spring plan.



Exceptions: AP, A Levels, IB, College Credit

LIBERAL ARTS CORE			
ENGL	1102	COMPOSITION II	S15
ECON	1100	BASIC MACRO-ECONOMICS	AP?
ECON	1200	BASIC MICRO-ECONOMICS	AP?
MATH	1108	MATH FOR BUSINESS: FINITE	F14
MATH	1109	MATH FOR BUSINESS: CALCULUS	AP?
PHIL	1000	PHILOSOPHY OF HUMAN NATURE	F14
THEO	1000	FAITH & CRITICAL REASONING	S15
HIST	1 ___	UNDRSTND HIST CHNGE:	F14
ECON	2150	STATISTICS 1	S15
----	----	FINE ARTS CORE REQ	~~
ENGL	2000	TEXT & CONTEXT	~~
PHIL	4000	PHILOSOPHICAL ETHICS	~~
THEO	4 ___	SACRED TEXTS & TRAD CORE REQ	~~
BUSINESS INTEGRATED CORE			
CBBU	1001	Ground Floor	F14
LIBERAL ARTS ELECTIVES			
----	----	ANY LIBERAL ARTS COURSE	~~
----	----	ANY LIBERAL ARTS COURSE	
----	----	ANY LIBERAL ARTS COURSE	
----	----	ANY LIBERAL ARTS COURSE	
----	----	ANY LIBERAL ARTS COURSE	
----	----	ANY LIBERAL ARTS COURSE	

If you received a 4 or 5 in Macro, Micro, or Calculus OR A Level Credit OR IB Credit OR Credit from another college, you can take other coursework now:

- Foreign Language-OPTIONAL
- ENGL 2000: Text & Context (Comp 2 prereq)
- PHIL 3000: Philosophical Ethics (Phil 1000 prereq)
- THEO 3000+: Sacred Texts (Theo 1000 prereq)
- Advanced Math (Calculus 2)-OPTIONAL
- Start FCRH Minor-OPTIONAL
- Statistical Decision Making (Stats 1 prereq) – BUT recommend wait until Sophomore year AND **NEED PRIOR PERMISSION FROM ME**
- You may have trouble registering yourself for Phil 3000 or Theo 3000+ or Stats Dec Making - if so, contact me or the department chair
- Fine Art (only if you do not plan to study abroad)

Note: Diagram at left illustrates just one of many options.

- You are welcome to meet with me individually to create Spring plan.

MAKE SURE CREDITS HAVE ALREADY TRANSFERRED! Check My.Fordham.edu



Exceptions: GBHP

- Should be discussing directly with Dean Dunn



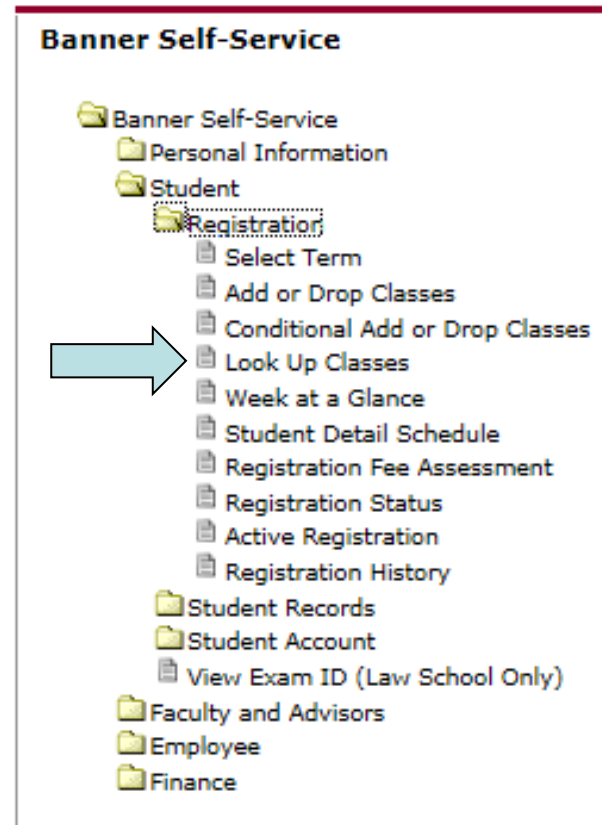
Identifying Spring Classes

- After you determine what you need/want to take in spring, prepare prior to registration by looking up course CRNs
- CRN = 5-digit code you need to register for a specific class section
- **Look up multiple class section options – classes fill up quickly and you should have many back-ups**



Identifying Spring Classes

- Step 1: Go to My.Fordham.edu:
 - Student Tab
 - Banner Self-Service
 - Student Folder
 - Registration Folder
 - Look Up Classes





Identifying Spring Classes

- Step 2: Select Term

You will see:

Pick Spring 2015 and Click Submit:

Select Term or Date Range

Select Term or Date Range

Search by Term:

Search by Term:



OR

OR

Search by Date Range (MM/DD/YYYY):

Search by Date Range (MM/DD/YYYY):

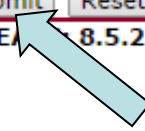
From:

To:

From:

To:

RELEASE 8.5.2.1






Identifying Spring Classes

- Step 3: Look Up Classes
 - **Do NOT** Click “Course Search.”
 - If you select a subject and click “course search,” it will not narrow down the options appropriately and will show you classes for which you may not be eligible.
 - **DO** Click “Advanced Search.”
 - You do not need to select a subject to click “advanced search.”

Look Up Classes

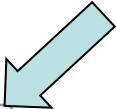
 Please click the "Advanced Search" button before making any selections.

Subject:

Accounting LAW	▲
Administration & Supervision	☰
Administrative FCRH	
Administrative LAW	
African & African Amer Studies	
American Catholic Studies	
American Studies	
Anthropology	
Antitrust	
Arabic	▼

Course Search

Advanced Search





Identifying Spring Classes

- Step 3 continued:
 - Use fields to search classes offered. You can choose which fields to utilize, but **must select at least one “Subject.”**
 - Hold Shift key and scroll to bottom to select all items.
 - Hold Ctrl key and click various items to select >1 item.
 - Select Class Search when you have entered all fields.

Look Up Classes

- Use the selection options to search the class schedule. You may choose any combination of fields to narrow your search, but you must select at least one “Subject.”
- You can select all subjects by holding the “Shift key” down and scrolling to the bottom of the Subject menu.
- You can select multiple subjects and/or other options by holding the “Ctrl key” down and clicking on various options with your mouse.
- Use the Course Attribute Type menu to search for courses in Interdisciplinary Programs, cross-listed courses that apply to multiple departments, or courses that are cross-listed with another department.
- To search for all courses within an Interdisciplinary Program, select that department from the Course Attribute Type menu.
- To search for all cross-listed courses applying to a particular department, select that particular department from the Course Attribute Type menu.

Subject: Administration & Supervision ▲
 Administrative FCRH [⌘]
 African & African Amer Studies ▼

Course Number:

Title:

Schedule Type: All ▲
 Dissertation [⌘]
 Examination ▼

Credit Range: hours to hours

Campus: All ▲
 Calder [⌘]
 Lincoln Center ▼

Course Level: All ▲
 GSS PHD (Semester) [⌘]
 Graduate (Semester) ▼

College: All ▲
 Fordham Col/Lib. Stud (RH&LC) [⌘]
 Fordham College/Lincoln Ctr ▼

Instructor: All ▲
 Abraham, Laurence J. [⌘]
 Abreu, Sergio ▼

Session: All ▲
 Afternoon Summer Session [⌘]
 Evening ▼

Course Attribute Type: All ▲
 Accounting Minor (FCRH) [⌘]
 Advanced History Core ▼

Start Time: Hour Minute am/pm

End Time: Hour Minute am/pm

Days: Mon Tue Wed Thur Fri Sat Sun



Identifying Spring Classes

Step 3 continued:

- Recommend that you enter:
 - Subject (need at least 1)
 - Course Number
 - Campus: Rose Hill
 - Course Level: Undergraduate
 - College
 - Pick FCRH for all classes but Ground Floor
 - Pick Gabelli School for Ground Floor
 - May not pick any other college (unless LC only foreign language-Japanese or Russian)
- Optional, will narrow search:
 - Course Attribute Type (recommend)
 - Understanding Historical Change (NOT History)
 - Fine and Performing Arts
 - Sacred Texts & Trad Core Req
 - Texts & Contexts
 - Globalism CBA
 - Particular Days/Times (do not recommend; only for special cases)
 - If you want M/R, you can just put M
 - Particular Instructor (don't recommend-too limiting)
- Recommend do not use:
 - Title, Schedule Type, Credit Range, or Session Fields

Searching for Microeconomics:

The screenshot shows a search form with the following fields and values:

- Subject:** Dance (selected), Economics (highlighted), Economics LAW
- Course Number:** 1200
- Title:** (empty)
- Schedule Type:** All (selected), Dissertation, Examination
- Credit Range:** (empty) hours to (empty) hours
- Campus:** Off-Site (selected), Rose Hill (highlighted), Westchester
- Course Level:** Law (Non Degree) (selected), Master of Laws, Undergraduate
- College:** Fordham College/Lincoln Ctr (selected), Fordham College/Rose Hill (highlighted), Fordham Prof & Cont St (RH&LC)
- Instructor:** All (selected), Abraham, Laurence J., Abreu, Sergio
- Session:** All (selected), Afternoon Summer Session, Evening
- Course Attribute Type:** All (selected), Accounting Minor (FCRH), Advanced History Core
- Start Time:** Hour 00, Minute 00
- End Time:** Hour 00, Minute 00
- Days:** Mon Tue Wed Thur

At the bottom, there is a **Class Search** button and a **Reset** button. A red 'X' is placed over the 'Start Time' and 'End Time' fields, and a red arrow points to the 'Class Search' button.



Identifying Spring Classes

- Step 4: Review available sections

- Select: Indicates if Class is available

- C=closed

- RC=reserve closed

- Note: Class may not say it is closed, but spaces that are left may not be able to be used by Gabelli students (for example, held for FCRH students)

- HAVE BACK-UPS

- CRN:

- Code needed to register for class

- Write down all CRNs of courses you would be willing to take; it is unlikely you will get your first choice

- Sec: check to make sure it starts with an "R"

- FR can't take "L" or "E" or "C"

- LC-only Foreign Language Japanese or Russian exception for "L"

- Ground Floor & Fair Trade only "E" exception for Freshmen

Sections Found

Economics

Select	CRN	Subj	Crse	Sec	Cmp	Cred	Title	Days	Time	Instructor	Date (MM/DD)	Location
NR	10920	ECON	1200	R01	R	3.000	BASIC MICROECONOMICS	TF	01:00 pm-02:15 pm	Emre Ozsoz (P)	01/17-05/19	TBA
NR	10923	ECON	1200	R02	R	3.000	BASIC MICROECONOMICS	MR	10:00 am-11:15 am	Michael Mebane (P)	01/17-05/19	TBA
NR	10925	ECON	1200	R03	R	3.000	BASIC MICROECONOMICS	MR	10:00 am-11:15 am	Michael J. Gallagher (P)	01/17-05/19	TBA
NR	10926	ECON	1200	R04	R	3.000	BASIC MICROECONOMICS	MR	11:30 am-12:45 pm	Michael J. Gallagher (P)	01/17-05/19	TBA
NR	10929	ECON	1200	R05	R	3.000	BASIC MICROECONOMICS	MR	11:30 am-12:45 pm	Frances A. Hernandez (P)	01/17-05/19	TBA
NR	10931	ECON	1200	R06	R	3.000	BASIC MICROECONOMICS	MR	04:00 pm-05:15 pm	Mark G. Nixon (P)	01/17-05/19	TBA
NR	10933	ECON	1200	R07	R	3.000	BASIC MICROECONOMICS	TF	08:30 am-09:45 am	Josephine Kibe (P)	01/17-05/19	TBA
NR	10934	ECON	1200	R08	R	3.000	BASIC MICROECONOMICS	TF	11:30 am-12:45 pm	Josephine Kibe (P)	01/17-05/19	TBA
NR	10935	ECON	1200	R09	R	3.000	BASIC MICROECONOMICS	TF	01:00 pm-02:15 pm	Angela Solikova (P)	01/17-05/19	TBA
NR	10938	ECON	1200	R10	R	3.000	BASIC MICROECONOMICS	TF	02:30 pm-03:45 pm	Angela Solikova (P)	01/17-05/19	TBA
NR	10939	ECON	1200	R11	R	3.000	BASIC MICROECONOMICS	TF	02:30 pm-03:45 pm	Emre Ozsoz (P)	01/17-05/19	TBA
NR	10940	ECON	1200	R12	R	3.000	BASIC MICROECONOMICS	TWF	10:30 am-11:20 am	Frank Canovatchel (P)	01/17-05/19	TBA
NR	10942	ECON	1200	R13	R	3.000	BASIC MICROECONOMICS	TWF	11:30 am-12:20 pm	Frank Canovatchel (P)	01/17-05/19	TBA
NR	10943	ECON	1200	R14	R	3.000	BASIC MICROECONOMICS	MR	05:30 pm-06:45 pm	Mark G. Nixon (P)	01/17-05/19	TBA
NR	17279	ECON	1200	R15	R	3.000	BASIC MICROECONOMICS	MW	06:00 pm-07:15 pm	Frances A. Hernandez (P)	01/17-05/19	TBA

[Class Search](#)



Identifying Spring Classes

- Step 4: Review available sections (continued)
 - If Registering for History, Fine Arts, Text & Context, Sacred Texts & Traditions, make sure the course has the right Course Attribute Type designated:
 - Understanding Historical Change (if looking for AFAM 1600, chose AFAM Subject, not History)
 - Fine and Performing Arts
 - Sacred Texts & Trad Core Req
 - Texts & Contexts
 - CANNOT take Eloquencia Perfecta (FCRH) classes EXCEPT can take English 2000 Eloquencia Perfecta

Sections Found History

Select	CRN	Subj	Crse	Sec	Cmp	Cred	Title	Days	Time	Instructor	Date (MM/DD)	Location	Attribute
NR	10911	HIST	1000	R02	R	3.000	UNDERSTANDING HISTORICAL CHANGE: MODERN EUROPE (Eloquencia Perfecta 1)	MR	11:30 am-12:45 pm	William D. Myers (P)	01/17-05/19	TBA	Undrstndng Historical Change
NR	10913	HIST	1000	R03	R	3.000	UNDERSTANDING HISTORICAL CHANGE: MODERN EUROPE (Eloquencial Perfecta 1)	MR	02:30 pm-03:45 pm	William D. Myers (P)	01/17-05/19	TBA	Undrstndng Historical Change
NR	10917	HIST	1000	R04	R	3.000	UNDRSTND HIST CHNGE: MOD EUR	TF	08:30 am-09:45 am	Louie D. Valencia (P)	01/17-05/19	TBA	Undrstndng Historical Change
NR	10919	HIST	1000	R05	R	3.000	UNDRSTND HIST CHNGE: MOD EUR	TF	10:00 am-11:15 am	Bernice G. Rosenthal (P)	01/17-05/19	DE	Undrstndng Historical Change
NR	10921	HIST	1000	R06	R	3.000	UNDRSTND HIST CHNGE: MOD EUR	MR	02:30 pm-03:45 pm	Esther Liberman Cuenca (P)	01/17-05/19	TBA	Undrstndng Historical Change
NR	17159	HIST	1000	R07	R	3.000	UNDRSTND HIST CHNGE: MOD EUR	TWF	12:30 pm-01:20 pm	Heidi L. Febert (P)	01/17-05/19	TBA	Undrstndng Historical Change
NR	18044	HIST	1000	R08	R	3.000	UNDRSTND HIST CHNGE: MOD EUR	TWF	10:30 am-11:20 am	Heidi L. Febert (P)	01/17-05/19	TBA	Undrstndng Historical Change
NR	15078	HIST	1075	R01	R	3.000	UNDERSTANDING HISTORICAL CHANGE: EARLY MODERN EUROPE (Eloquencia Perfecta 1)	MR	11:30 am-12:45 pm	Michael Conforti (P)	01/17-05/19	TBA	Undrstndng Historical Change
NR	10937	HIST	1075	R04	R	3.000	UNDRSTND HIST CHG:ERLY MOD EUR	TWF	12:30 pm-01:20 pm	Johnathan M. Pettinato (P)	01/17-05/19	TBA	Undrstndng Historical Change
NR	10941	HIST	1100	R01	R	3.000	UNDRSTND HIST CHNGE: AMER HIST	MR	08:30 am-09:45 am	Paul Cimbala (P)	01/17-05/19	TBA	Undrstndng Historical Change
NR	17160	HIST	1100	R02	R	3.000	UNDRSTND HIST CHNGE: AMER HIST	MR	10:00 am-11:15 am	Paul Cimbala (P)	01/17-05/19	TBA	Undrstndng Historical Change

Sections Found Music

Select	CRN	Subj	Crse	Sec	Cmp	Cred	Title	Days	Time	Instructor	Date (MM/DD)	Location	Attribute
NR	10298	MUSC	1100	R01	R	3.000	MUSIC HISTORY INTRO	MR	08:30 am-09:45 am	TBA	01/17-05/19	FMH 216	Fine & Performing Arts
NR	10299	MUSC	1100	R02	R	3.000	MUSIC HISTORY INTRO	MR	10:00 am-11:15 am	TBA	01/17-05/19	FMH 215	Fine & Performing Arts
NR	10300	MUSC	1100	R03	R	3.000	MUSIC HISTORY INTRO	MR	11:30 am-12:45 pm	TBA	01/17-05/19	FMH 215	Fine & Performing Arts
NR	10301	MUSC	1100	R04	R	3.000	MUSIC HISTORY INTRO	MR	02:30 pm-03:45 pm	TBA	01/17-05/19	FMH 216	Fine & Performing Arts
NR	10302	MUSC	1100	R05	R	3.000	MUSIC HISTORY INTRO	MR	04:00 pm-05:15 pm	TBA	01/17-05/19	FMH 216	Fine & Performing Arts
NR	15312	MUSC	1100	R06	R	3.000	MUSIC HISTORY INTRO	TF	08:30 am-09:45 am	TBA	01/17-05/19	FMH 216	Fine & Performing Arts
NR	15314	MUSC	1100	R07	R	3.000	MUSIC HISTORY INTRO	TF	10:00 am-11:15 am	Matthew B. Gelbart (P)	01/17-05/19	FMH 216	Fine & Performing Arts
NR	17226	MUSC	1100	R08	R	3.000	MUSIC HISTORY INTRO	TF	11:30 am-12:45 pm	TBA	01/17-05/19	FMH 216	Fine & Performing Arts
NR	17227	MUSC	1100	R09	R	3.000	MUSIC HISTORY INTRO	TF	01:00 pm-02:15 pm	TBA	01/17-05/19	FMH 216	Fine & Performing Arts
NR	17229	MUSC	1100	R10	R	3.000	MUSIC HISTORY INTRO	TF	02:30 pm-03:45 pm	TBA	01/17-05/19	FMH 216	Fine & Performing Arts



Identifying Spring Classes

Returning to Step 3:

To Find **Ground Floor**:

- Subject: Core Business
 - Course Number: 1001
 - Campus: Rose Hill
 - Course Level: Undergraduate
 - College: Gabelli School of Business
- IF YOU HAVE NOT TAKEN GROUND FLOOR IN FALL OR YOU DROPPED IT IN FALL, YOU MUST TAKE GROUND FLOOR IN SPRING; you may not take Sophomore Business Core Curriculum without Ground Floor (and other courses – see previous slides).

The screenshot shows a search form with the following fields and values:

- Subject:** Consulting Projects, Core Business (selected), Corporations
- Course Number:** 1001
- Title:** (empty)
- Schedule Type:** All (selected), Dissertation, Examination
- Credit Range:** (empty) hours to (empty)
- Campus:** Off-Site, Rose Hill (selected), Westchester
- Course Level:** Law (Non Degree), Master of Laws, Undergraduate (selected)
- College:** Fordham Prof & Cont St (West), Gabelli School of Business (selected), Grad Sch of Arts and Sciences
- Instructor:** All (selected), Abraham, Laurence J., Abreu, Sergio
- Session:** All (selected), Afternoon Summer Session, Evening
- Course Attribute Type:** All (selected), Accounting Minor (FCRH), Advanced History Core
- Start Time:** Hour 00, Minute 00
- End Time:** Hour 00, Minute 00
- Days:** Mon Tue Wed Thu

At the bottom, there are two buttons: "Class Search" and "Reset". An arrow points to the "Class Search" button.



Holds Preventing Registration

Prior to Registration, be sure that you do not have any holds on your account.

- Student Tab
- Banner Self-Service
- Student Folder
- Student Records Folder
- View Holds
- **IF YOU HAVE A HOLD, TAKE CARE OF IT BEFORE REGISTRATION!**

Multiple types of Holds:

- Financial
 - See Financial Services in Thebaud Hall
- Registration or Dean's Hold
 - Did not complete Integrity Tutorial
 - Complete tutorial and email Dean Jason
 - Midterm Grades
 - Meet with Dean Jason
- Immunization Hold
 - See Health Services
- Final Transcript Hold
 - See Enrollment Services
- IALC Hold
 - Need to consult with the IALC re: ESL

Banner Self-Service

- Folder: Banner Self-Service
 - Folder: Personal Information
 - Folder: Student
 - Folder: Registration
 - Folder: **Student Records** (highlighted with a blue arrow)
 - View Holds
 - Midterm Grades
 - Final Grades
 - Academic Transcript
 - Request Printed Transcript
 - View Status of Transcript Requests
 - Course Catalog
 - View Student Information
 - Class Schedule
 - Apply to Graduate
 - Folder: Student Account
 - View Exam ID (Law School Only)
 - Folder: Faculty and Advisors
 - Folder: Employee
 - Folder: Finance

View Holds

Please note that some holds are sensitive and may not display on this page.

Administrative Holds

Hold Type	From Date	To Date	Amount	Reason	Originator	Processes Affected
Financial Aid Hold	Oct 23, 2008	Jan 01, 2009			Registrar	
Past Due Balance (Current)	Feb 24, 2009	Dec 31, 2009		Past Due Balance	Bursar	Registration Transcripts



Gabelli School Registration Dates

Monday, October 27, 2014:	All students in evening division.
Monday, November 10, 2014:	Students who have earned 87 credits & above.
Wednesday, November 12, 2014:	Students who have earned 57 credits & above.
Friday, November 14, 2014:	Students who have earned 27 credits & above.
Tuesday, November 18, 2014:	Students who have earned 0 credits & above.***

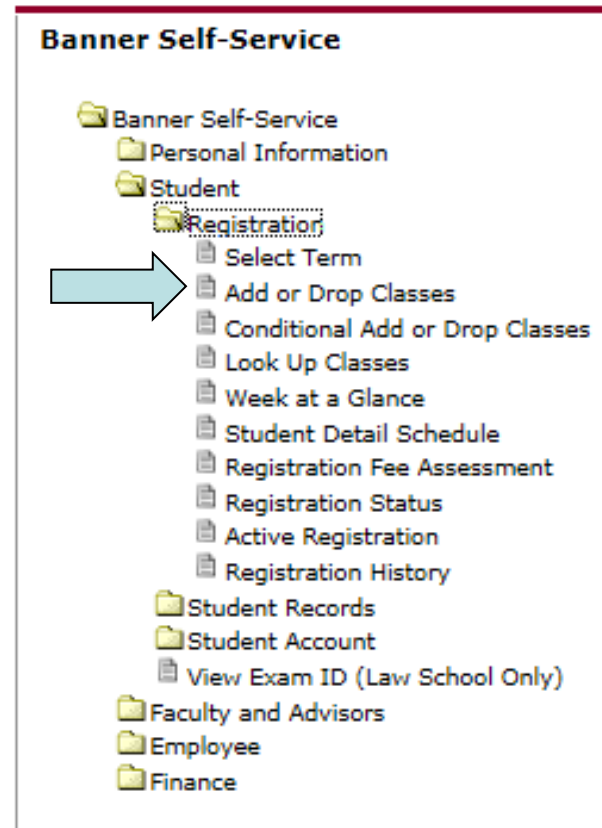
Notes:

- **All days begin at 7:00am**
- These days are for GABELLI students, not other colleges.
- Based on **EARNED** credits; does not include fall classes.
 - If you have 0 AP, A level, IB, or other college credits, you have currently earned 0 credits.
- *******The majority of Gabelli School freshmen will register Tuesday, November 18, 2014.
 - A small number of students, such as Athletes or some students registered with Disability Services, will receive an advising pin from the relevant department to register at an earlier time.
 - **Varsity Athletes: You must attend MANDATORY team advising meeting with me either Thursday, October 30th 1-2:15pm or Wednesday, November 5th 2:30-4:00pm; see your email for details.**



Registering for Classes

- Go to My.Fordham.edu:
 - Student Tab
 - Banner Self-Service
 - Student Folder
 - Registration Folder
 - Add or Drop Classes





Registering for Classes

- For Registration guidance, use the Tutorial found on My.Fordham.edu
 - Student Tab
 - Student Registration Tutorial
 - Click here to view

- [Tutorial Demonstration](#)



Having Trouble?

- May be a FCRH only course for their core curriculum (Eloquentia Perfecta); can only take English 2000 Eloquentia Perfecta class
- Reserve Closed: Looks open, but may have spots reserved for FCRH students
- May not be eligible due to other reasons (pre-requisites, etc.)
- May have reached your credit limit: **17**
 - If you think you will be registering for more than 17 credits, you must see me PRIOR to registration
- Don't wait – register for a different course/section – better to register and drop later than not register at all
 - Come to see me for help – if I can help, you can always drop the other class
- If an IT problem, contact the Help Desk at 718-817-3999 or helpdesk@fordham.edu
- You may be “locked out” of registration due to the number of students registering simultaneously; just keep trying
- Some students experience trouble with their computers; consider trying a computer lab
- Make sure ALL of your additional credits have transferred BEFORE registration
- You may have a HOLD on your account
- **These slides available at: <http://www.gabelliconnect.com/freshman-advising>**



Registering for Classes

- Any questions?
- Reminders
 - **Only Rose Hill Classes (“R” sections)**; No “L” Lincoln Center (except LC Japanese/Russian), “E” Evening (except Ground Floor or Fair Trade), or Liberal Studies/School of Continuing and Professional Studies Courses.
 - Check your account for **Holds** in plenty of time to fix issues prior to registration.
 - Have **Back-ups of courses** – you probably won’t get your first choices (or second or third...).
 - **Contact me *prior* to registration** if you are choosing classes that I have not advised today or with questions.
 - Must take **7 required courses for SO year** if you haven’t already.
 - ESL students must take **ESL 2** unless told otherwise after Finals.



Your Fall Courses

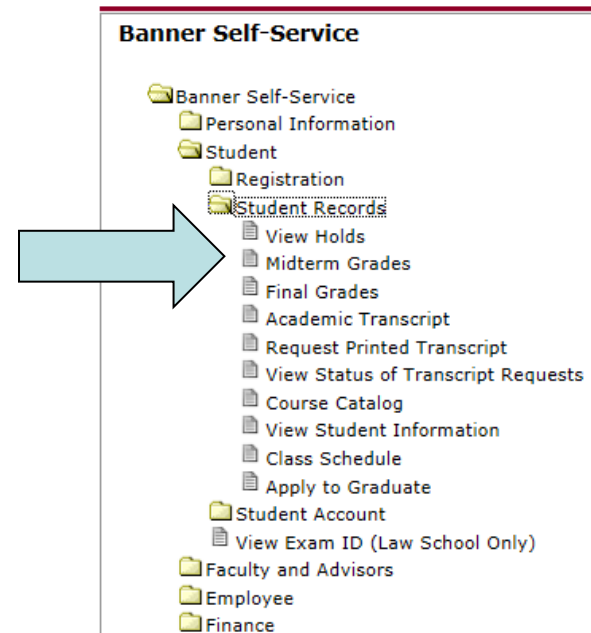
- Can no longer add classes for Fall.
- **DROP DEADLINE 11/7**; After that, can only drop classes with a WF.
- If you are considering dropping a course, you **MUST** speak with the professor first!
- Schedule an appointment with me on Gabelli Access to drop.





Midterm Grade Progress Report

- Find your midterm progress report here:
 - My.Fordham.edu
 - Student Tab
 - Banner Self-Service
 - Student Folder
 - Student Records Folder
 - Midterm Grades



- If you think the professor made an error, address it now with the professor
 - If it is confirmed as an error, adjustments may not be visible



Midterm Grade Progress Report

- University Grading System

A=4.0=93-100

A-=3.67=90-92

B+=3.33=87-89

B=3.0=83-86

B-=2.67=80-82

C+=2.33=77-79

C=2.0=73-76

C-=1.67=70-72

D=1.0=60-70

F=0.0=<59

- **PF/P**=satisfactory work, no grade points.
- **PF/F**=failure, but not included in grade point computation.
- **WF** =failure for withdrawing from a course after the last day for dropping courses without academic penalty. It is the equivalent of an F.
- **S/U**=satisfactory/unsatisfactory basis. It is not included in grade point computation.
- **INC**=temporary grade given when a course requirement, other than the final exam, has not been met.
- **ABS** =temporary grade granted by the instructor for absence from the final examination, due to extenuating circumstances such as illness or death in the family.
- **NGR**=no grade reported by the instructor.
- **W**=withdrawal from a course after add/drop without academic penalty.

Definition of Terms

- **Attempted Hours:** The number of credits assigned to each course for which the student registered.
- **Earned Hours:** The actual number of credits earned in each course; cumulatively reflects the number of credits successfully completed to date, meaning all classes already passed at Fordham plus any IB/AP/transfer credits awarded, including Pass/Fail courses; does not include courses in which you are currently enrolled.
- **Quality Points:** The numerical value of the earned grade in each course multiplied by the number of credits assigned for each course that was attempted for a regular grade (quality hours).
- **Grade point average:** is a weighted average used to indicate to the student and to the faculty the academic progress of each student. Since each course is added to the accumulated average of all courses pursued, it is a cumulative index and is computed by dividing the quality points by the quality hours.
- A passing grade is a D or better.
- “WF,” or withdrawal failure, is the numerical equivalent of an F and is counted towards GPA hours.
- Courses taken Pass/Fail are not counted towards GPA hours, and are not included in the GPA.



Midterm Grade Progress Report

- How did you do?
 - If your midterm results were strong, congratulations!
 - Be proud, but don't relax too much between now and finals and lose your advantage.
 - If your midterm results were moderate, good job.
 - Try to identify areas of slight improvement.
 - If your midterm results were poor, reflect on improvement.
 - What can you do to strengthen your grade?
 - Have you visited Professor Office Hours?
 - Have you visited the Help rooms for Math, Economics, Writing, etc., or gotten a tutor?
 - If your midterm results are failing, strategize.
 - Should you be dropping a class to allow more time for other courses?
 - Can you recover your grade?
 - What is your plan to succeed? Did you create a plan with your professor?
- Students in the Poor/Failing range will be required to meet with me; you should have already received an email.
- Midterm Progress Reports are being sent home to parents.



Tutoring/Academic Support

- **GSB STUDY CENTER: BUSINESS**

- Tutoring is provided for Math, Economics, and many other Business courses Monday-Thursday 9am-5pm and Friday 9am-4pm in 207 Hughes Hall. Sign-up on Gabelli Access.

- **THE WRITING CENTER**

- Tutors address logical, rhetorical, and grammatical concerns in your writing. The Writing Center can assist with any type of writing, from conception, to composition, to completion. Monday through Thursday 9:00 am-8:00 pm; Fridays 10:00am-3:00pm on the East side of Dealy Hall's 5th floor, in the Economics Dept. Students can sign-up at www.fordham.edu/writingcenter or by phone at 718-817-4032. Walk-ins are welcome whenever space is available. Students should be on time, bring the assignment, and expect to do work.

- **OFFICE OF DISABILITY SERVICES**

- Accommodations for students with disabilities
- Academic coaching for all students

- **COUNSELING & PSYCHOLOGICAL SERVICES and CAMPUS MINISTRY**

- Assistance for students having difficulty adjusting to college

- **PHILOSOPHY**

- Graduate students in the department can provide tutorial assistance. Students should contact Dr. Samir Haddad, the Associate Chair in Collins Hall 101 for tutorial referrals.

- **ECONOMICS**

- Students can go to the Economics Tutoring Center in Dealy Hall E-533 or email ecotutor@fordham.edu for an appointment.

- **MODERN LANGUAGES**

- Free tutoring, practice, and conversation in all of the languages taught in the department is available. Contact the department for tutoring schedules. The Language Lab in Keating B25 also assists students with Modern Languages.

- **MATHEMATICS**

- The Math Help Room is located in JMH 410. Math Room Hours: M- F 10:00-4:00. No appointment is necessary.

- **GABELLI DEANS/DIRECTORS**

- Appointments and walk-ins

- **PROFESSORS**

- Appointments and office hours



Academic Standards

Year in College	Minimum GPA Acceptable	Academic Probation	Suspension 2 Semesters	Dismissal
Freshman				
Fall	1.350	1.349 + below		1.000 + below
Spring	1.600	1.500 - 1.599	1.450 - 1.499	1.449 + below

- Standards applied at the end of each semester, not for Midterm Progress Reports.
- Academic Probation
 - Academic probation is a serious warning that a student must improve his/her academic performance.
 - May continue to study at Fordham & be awarded financial aid.
 - Not automatically acquired by the student but must be granted by the dean; restricted to two consecutive semesters.
 - Subject to dismissal if judged not to be making satisfactory progress.
 - May be prohibited from participating in extracurricular activities, being an RA, or representing the University in intervarsity athletic competition.
- Academic Suspension
 - In addition to GPA, a student who has three failures in any semester may be subject to suspension or dismissal.
 - Enforced termination of formal studies; only granted once in career for minimum of 2 semesters.
 - If after a period of suspension a student wished to continue his/her studies in the Gabelli School, he/she must formally apply for readmission. Need a 2.750 GPA at an approved baccalaureate institution.
- Academic Dismissal
 - Once dismissed, may no longer take courses.



Meetings with Me

- Please schedule on Gabelli Access
- Next 2 weeks, scheduled meetings with me should be limited to:
 - Dropping a class (see your professor FIRST!)
 - Required Meeting (midterm 2.0 or below; F in class)
 - Walk-ins for registration questions, curriculum planning, etc. (Wednesdays and, if possible, between other appointments)
 - If you already have an appointment, you can keep it



Freshman Advising Calendar

- Included in your handout provided at orientation, on your fall DETAILED academic schedule (not the week at a glance), and today
- Look at your schedule to determine your GSB Advising Group
 - On your schedule, you will be registered for a class:
 - FRESHMAN ADVISING/MENTORING - ZZBU ADVI - R13
 - The two numbers after “R” are your Advising Group number
 - Same Advising Group number as your GSB small group on Monday of Orientation
- Unless noted, all sessions are in Keating 1st Auditorium 1-2:15pm
- All sessions are MANDATORY

Remaining Fall Advising Sessions:

Fifth Fall Advising Session: Monday, 11/3

Sixth Fall Advising Session: Thursday, 11/20

Spring Advising Sessions:

First Spring Advising Session: Thursday, 1/22

Second Spring Advising Session: Thursday, 2/12

Third Spring Advising Session: Thursday, 3/5

Fourth Spring Advising Session: Thursday, 3/26



Upcoming Gabelli School Events

- Go to www.gabelliconnect.com and go to the Events tab
- Countless events planned with firms in a variety of business disciplines, as well as club activities
- Highlights:
 - President's Council Lecture: Ken Langone, Co-Founder, Home Depot
 - Monday, October 27th, 6:00pm, Keating 1st Auditorium
 - Gabelli Frosh Film Fest: *The Queen* with Business Communications Professor McCarthy
 - Wednesday, October 29th, 2:30pm, Hughes Hall Daleo B (Basement)
 - Flaum Lecture Series: Alex Gorsky, Chairman & Ceo, Johnson & Johnson
 - Thursday, October 30th, 6:00pm, Steelcase Penthouse, 4 Columbus Circle



Discussion with Advising Assistants

Group #	Small Group Room
1	KE B16
2	KE 105
3	KE 312
4	KE 317
5	KE 208
6	KE 116
7	KE 215
8	KE B21
9	KE 110
10	KE 205
11	KE 214
12	KE 206
13	KE 120
14	KE 218
15	KE 219
16	KE 204
17	KE B19
18	KE 209
19	KE 319
20	KE 114

