



Gabelli School of Business Freshman Advising Program Large Group Meeting

Greer Jason, Ph.D.

Assistant Dean and Advisor for Freshmen

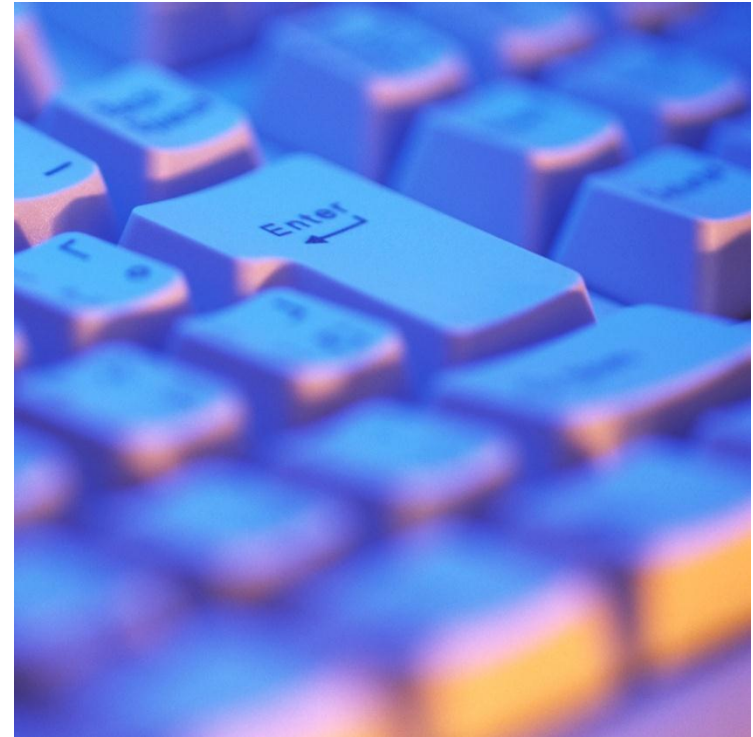
Monday, March 5, 2012

Thursday, March 8, 2012



Today's Topics

- Mission & Ministry
- Registering for Fall 2012 Courses
- Summer 2012 Courses
- Freshman Advising Dates
- Upcoming Gabelli Events





Mission and Ministry

- Father Phil Florio, SJ
 - Assistant Vice President for Campus Ministry
- Dr. Jennifer Mussi
 - Assistant to the Vice President for Mission and Ministry



Fall 2012 Courses

- Most courses are part of the Integrated Business Core Curriculum.
- Cohort Style: You will be with the same group of students in all of your classes; the classes are offered in a group/set.
- The group of students in your class will be broken into teams; you will work with your team on your Integrated Project.
 - Team of 4-5 students.
 - Team serves as a consulting firm presenting analysis and recommendations to the top management team of a Fortune 500 company!



Fall 2012 Courses

- Integrated Project Class: 1 credit, meets the full Fall 2012 semester. You will work in your team on the Integrated Project, incorporating coursework from all Fall 2012 courses.
- Full semester classes (3 or 4 credits): Principles of Financial Accounting (ACBU 2222), Marketing Principles (MKBU 3225), and Statistics (ECON 2140).
- Half semester classes (1.5 credits): Business Communications (CMBU 2664), Principles of Management (MGBU 3222), Strategy (MGBU 4440), and Information Systems (INSY 2299). Take other half of class either Fall junior or Fall senior year.
 - Two of these 1.5 credit classes will be offered **1 day each week for the entire Fall 2012 Semester:** Business Communications (CMBU 2664) and Principles of Management (MGBU 3222).
 - Two of these 1.5 credit classes will be offered **2 days each week for half of the Fall 2012 Semester:** Strategy (MGBU 4440) - first 7 weeks of the semester and Information Systems (INSY 2299) - second 7 weeks of the semester.
- You ALL must take ALL of these courses. Exceptions: GBHP & students with Statistics.
- **EACH GROUP/SET OF CLASSES WILL HAVE ONE OF EACH OF THE ABOVE CLASSES.**



Example of Group/Set

Set/Group B						
CRN	COURSE NUMBER	COURSE TITLE	CREDITS	INSTRUCTOR	DAY	TIME
18566	CBBU-1002-RSB	ST:INTEGRATED PROJECT SO FALL	1.00	Loyola, Ignatius	R	03:45PM
	ACBU-2222-RSB	PRNPL OF FINANCIAL ACCTG	3.00	Loyola, Ignatius	MR	12:45PM
	CMBU-2664-RSB	BUSINESS COMMUNICATIONS	1.50	Arrupe, Pedro	T	11:15AM
	CMBU-2664-RSO	BUSINESS COMMUNICATIONS	1.50	Arrupe, Pedro	T	03:45PM
	INSY-2299-RSB	INFORMATION SYSTEMS	1.50	Xavier, Francis	F	11:15AM
	INSY-2299-RSB	INFORMATION SYSTEMS	.00	Xavier, Francis	M	03:45PM
	MGBU-3222-RSB	MANAGEMENT 1	1.50	Marquette, Jacques	T	12:45PM
	MGBU-4440-RSB	STRATEGY 1	.00	Canisius, Petrus	F	11:15AM
	MGBU-4440-RSB	STRATEGY 1	1.50	Canisius, Petrus	M	03:45PM
	MKBU-3225-RSB	MARKETING PRINCIPLES	3.00	Bellamine, Robert	MR	11:15AM
	ECON-2140-RSB	STATISTICS I	4.00	Campion, Edmund	TF	09:45AM



Registration for Fall 2012

- Different from Spring 2012 Registration
 - For Spring 2012, registered yourself for all classes
 - For Fall 2012, will register yourself for ONE class
 - You will register for ONE class. This class will indicate the group/set of classes you want and into which you will be placed. By picking one class, you are picking all of your classes, since they are offered as a group/set.
 - If the group/set of classes that you want is full, you must pick another group/set for which you will register; just like in previous registration, when a class is full, you need to find another section.
 - Keep trying groups/sets until you get into one.
 - Do NOT register for more than one group/set.
 - There are 12 groups/sets from which you can select; specific information with dates and times will be emailed to you after Spring Break.
 - Please note: Professors currently associated with courses are **SUBJECT TO CHANGE** until the semester begins.
 - **You will NOT be able to DROP/ADD.** Once you are in a cohort, no changes will be permitted. Absolutely no drop/add will be allowed after classes start.



Registration for Fall 2012

- **To register: enter the CRN of the INTEGRATED PROJECT of the set/group that you want. If you get in, great! If not, enter the CRN of your next choice and keep trying until you get into an INTEGRATED PROJECT class.**
- Only register for ONE Integrated Project. If you register for more than one, we will select one at random to determine your set/group of classes.
- After you register for the Integrated Project, it will look like you are only registered for one 1-credit course. Within a few weeks, we will do the rest and you will automatically be registered for your other courses that are part of the group/set EXCEPT for Business Communications.
- You will notice that each SET/GROUP has TWO BUSINESS COMMUNICATIONS (CMBU 2664) TIME OPTIONS.
 - You will only be placed in ONE of these times after registration.
 - You will not pick this time - it will be picked for you, but it will be one of the times listed within the set/group.
 - You will likely be notified of this time sometime in August. This is because your assignment to this class is directly tied to your team assignment. Teams cannot be finalized until late summer, so neither can your Bus Comm course.
- On the morning of Monday, **April 16, 2012**, a **HOLD** will be placed on your account to enable us to register you for the rest of your Fall 2012 courses. **Therefore, you MUST register before that time in order to select your set/group (and, if you have already taken statistics, to select your final course).**



Registration for Fall 2012: EXCEPTIONS

- **HONORS:** You will register for an Honors set/group of classes; you will be given the CRN.
- **VARSITY ATHLETES:** You will be registered for a set/group of classes that does not conflict with your athletic obligations; you do not need to register yourself for the cohort classes.
 - If you are a varsity athlete who has already taken Statistics, you will register yourself for an extra class.



Registration for Fall 2012: EXCEPTIONS

- STATISTICS

- If you will have already taken stats (ECON 2140) prior to Fall 2012, you must select another course to take
 - Liberal Arts required course
 - PHIL 3000, ENGL 2000, THEO 3000, etc.
 - Liberal Arts elective
 - Foreign Language, class for Economics minor, etc.
 - NO Business Core Curriculum
 - See me for permission to take anything else
- **Must register for this class prior to April 16th hold date**



Example of Group/Set

Register ONLY for this 1 CRN; you will automatically be registered for all of the others in this set/group

There are TWO Business Communications classes listed; you will only take ONE of them. You will be placed in one of the two based on your IP team.

Set/Group B						
CRN	COURSE NUMBER	COURSE TITLE	CREDITS	INSTRUCTOR	DAY	TIME
18566	CBBU-1002-RSB	ST:INTEGRATED PROJECT	1.00	Loyola, Ignatius	R	03:45PM
	ACBU-2222-RSB	PRNPL OF FINANCIAL ACCT	3.00	Loyola, Ignatius	MR	12:45PM
	CMBU-2664-RSB	BUSINESS COMMUNICATIONS	1.50	Arrupe, Pedro	T	11:15AM
	CMBU-2664-RSD	BUSINESS COMMUNICATIONS	1.50	Arrupe, Pedro	T	03:45PM
	INSY-2299-RSB	INFORMATION SYSTEMS	1.50	Xavier, Francis	F	11:15AM
	INSY-2299-RSB	INFORMATION SYSTEMS	.00	Xavier, Francis	M	03:45PM
	MGBU-3222-RSB	MANAGEMENT 1	1.50	Marquette, Jacques	T	12:45PM
	MGBU-4440-RSB	STRATEGY 1	.00	Canisius, Petrus	F	11:15AM
	MGBU-4440-RSB	STRATEGY 1	1.50	Canisius, Petrus	M	03:45PM
	MKBU-3225-RSB	MARKETING PRINCIPLES	3.00	Bellamine, Robert	MR	11:15AM
	ECON-2140-RSB	STATISTICS I	4.00	Campion, Edmund	TF	09:45AM

If you already took ECON 2140, make sure you register for an additional class before April 16

Professors Subject to Change



Registration Dates for Fall 2012

- Students with 56-89 credits:
 - Tuesday, April 3, 2012 at 7:00am
- Students with 26-55 credits:
 - Tuesday, April 10, 2012 at 7:00am
- Students with 10-25 credits:
 - Thursday, April 12, 2012 at 7:00am
- Students with 0-9 credits:
 - Friday, April 13, 2012 at 7:00am
- Remember: Spring 2012 credits do not count



Registration Holds

- Do not forget to **check your account in late March and early April to ensure there is no hold on your account preventing registration. If you find a hold, please clear it by registration!**
- If you do not have a hold, but do not register for classes by April 16th, you may not be able to select your set/group.



Computer Needs for 2012-2013

- You will each need a laptop or netbook with Office 10
 - If you have a PC with Office 10, great!
 - If you have a PC without Office 10, you need to get Office 10 on your machine
 - If you have MAC, you can rent Office 10 from the iCloud
 - If you do not have a laptop or netbook, you can contact the IT helpdesk for information on purchasing or leasing one



Spring 2013 Registration

- Hallmark of the integrated core curriculum is teamwork, the culture created in each cohort, and creating a diverse peer network for you by graduation.
- Necessary to give students different experiences in each of the 4 semesters of the business core to maximize learning.
- Will impact registration. Selecting cohorts now, but will be assigned to cohorts in the future to ensure cohort and team diversity, as well as to keep things fun and interesting.
- Most of you will still be able to pick your 5th class (either liberal arts required class or liberal arts elective).



Summer 2012 Classes

- Reminder: no Business Core classes permitted in summer because the Integrated Business Core Curriculum will be the signature value-add from Gabelli to your college education.
- To get approval from another school:
 - Find the class at another school, must be 4 year college or University, no community colleges
 - Get Course Description, proof of 3 credits, proof of 40-45 hours meeting time
 - Bring the information to me and get a course approval form
 - Get approval at the appropriate department
 - Bring me the approved form for your file
 - Register for and take the class
 - Bring the transcript with your grade of C or better



Freshman Advising Calendar

- Included in your handout provided at orientation, on your fall 2011 academic schedule, and at the first large group meeting
- Look at your schedule to determine your section
- Remaining Sessions:
 - Large Group Sessions
 - All meet in McGinley Center Ballroom 1-2:15pm
 - Third Spring Large Group: All students attend 4/23
 - Small Group Sessions
 - Spring: Look at spring 2012 detail schedule for room
 - With your Advising Assistant Only
 - On Thursday, 1-2:15pm
 - March 29



Appointments with Me

- To meet with me:
 - Make appointment on GSB-Access.com
 - No later than 5pm the business day prior



Upcoming Gabelli Events

1 March	5:00 p.m.	Beta Alpha Psi , Regional/local firm networking event with Becker, O'Keefe Commons
5 March	5:15 p.m.	Marketing Leadership Forum , Presentation from Diane DePaul, associate publisher at the Hearst Corporation and <i>Marie Claire</i> magazine.
21 March	10 a.m.	McCann-Erickson Site Visit , With Keisha Kellman, talent manager, as part the marketing leadership series.
29 March	1:00 p.m.	Beta Alpha Psi , Information session on accounting by Stan Veliotis, Dealy 207.
10-11 April	Times vary	Women in Leadership Summit , Keynote will be delivered by Barbara Corcoran, founder of the Corcoran real-estate group and a member of the cast of CNBC's <i>Shark Tank</i> . Exact schedule is under development and will be posted on GabelliConnect.
16 April	5:15 p.m.	Marketing Leadership Forum , Presentation by Lou Barricelli, public relations representative for Major League Baseball Network.
20-21 April	Times vary	Gabelli Undergraduate Business Research Conference , brings together business students from Gabelli and fellow Jesuit schools who are currently conducting original research to share it with their peers, faculty members and representatives from our surrounding New York City business community. The first day will include a networking poster session and a welcome dinner, and the second will feature a full slate of research presentations. All seniors in Gabelli's Honors Thesis Program and Global Business Honors Program will present their original research and be joined by a handful of student scholars from other Jesuit business schools.