



# Gabelli School of Business Freshman Advising Program Fourth Fall Large Group Meeting

Greer Jason-DiBartolo, Ph.D.

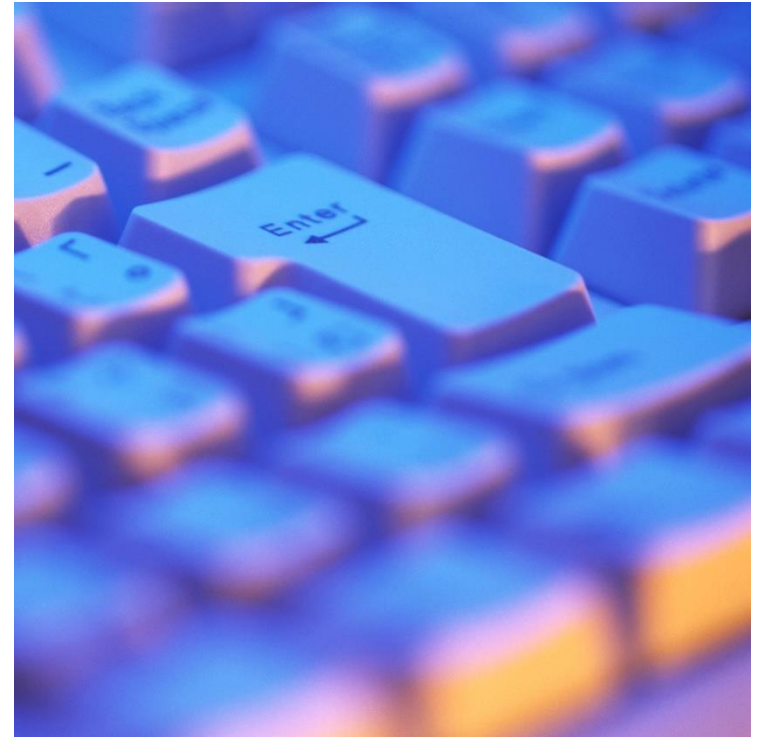
Assistant Dean and Advisor for Freshmen

Thursday, November 7, 2013



# Today's Topics

- Career Services
- Advising Reminders
  - Spring 2014 Registration
  - Resource Reminders
  - Revisit Freshman Advising Dates
- Registration Advice from Advising Assistants





# Career Services

- Kathlene Lewis, Associate Director of Employer Relations Career Services/Gabelli School of Business Liaison
- This presentation satisfies two workshops, which enable to you search for jobs/internships in CareerLink within a few weeks of today.
- [http://prezi.com/pgob2fdflisk/?utm\\_campaign=share&utm\\_medium=copy&rc=ex0share](http://prezi.com/pgob2fdflisk/?utm_campaign=share&utm_medium=copy&rc=ex0share)



# Spring Registration Reminders

- Should register for courses that fulfill Liberal Arts Requirements, the Ground Floor, and Foreign Language (if you choose); Guidelines were provided in last advising session
  - Last advising powerpoint available at: <http://www.gabelliconnect.com/freshman-advising>
  - 7 required courses prior to SO Year: **Calculus, Finite Math, Composition II, Ground Floor, Macroeconomics, Microeconomics, Statistics I (ECON 2140)**
  - Other course selections should be discussed with me *prior* to registration
  - **Only Rose Hill Classes (“R” sections)**; No “L” Lincoln Center (except LC Japanese/Russian), “E” Evening (except Ground Floor), or “C” School of Professional and Continuing Studies Courses.
- Registration Dates
  - Monday, November 11, 2013: Students who have earned 27+ credits.
  - Tuesday, November 12, 2013: Students who have earned 0-26 credits.
  - Note: Some students have been approved for early registration
- Check to ensure you do not have a HOLD on your account ASAP and REGULARLY
- Have plenty of back-up classes ready!
- When looking up classes, do NOT enter the Course Title!



# Fair Trade

- Fair Trade classes are still an option for spring 2014! Feel free to register yourself for one of the following:
  - Fair Trade & Microfinance\*, CRN 23152, W 6:30-9:15pm
  - Spirituality & Fair Trade, CRN 23154, T 6:30-9:15pm
  - Entrepreneurship & Fair Trade\*, CRN 23156, M 6:30-9:15pm
- Okay to select these even though section number starts with “E” and not “R”
- Take this instead of History/Fine Art/Philosophy/Theology – can take those later
- Will count towards a Business Elective
- Classes with \* will also count towards an Entrepreneurship Concentration or a Management Concentration



# Use Helpful Tutorial BEFORE Registration

- For Registration guidance, use the Tutorial found on My.Fordham.edu
  - Student Tab
  - Student Registration Tutorial
  - Click here to view

Home **Student** Alumni Faculty Advisor Employee October 19, 2011

**My Account**  
Student Accounts  
Make A Payment  
Statement and Payment

**Banner Self-Service**  
Banner Self-Service

**GMail**  
Gmail for Students  
www.fordham.edu/gmail

**FIDN Lookup**  
Display my FIDN

**Academic Notifications**  
View Final Exams Schedule  
Course Room Assignment Building Abbreviations

**Submit your Photo ID**  
Newly Admitted Students Only  
PHOTO UPLOAD  
Help  
If you need assistance, please contact the University Help Desk at (718) 817-3999, Monday-Friday 8:00am - 6:00pm, or via e-mail to: helpdesk@fordham.edu

**Financial Aid**  
Click Here to Login

**My Courses**  
Click Here  
Click Here to access your course home pages, email your professors, communicate with classmates, and access many more course-related materials.

**Financing Fordham On-Line**  
Click here to login.

**Student Registration Tutorial**  
Click here to view  
• Registration Dates Spring 2012  
• Banner Registration Quicktips  
• Banner Browser Compatibility

**Academic Profile**  
Primary  
No Data Found for Curriculum  
Advisors  
Select Another Term

**DegreeWorks - Students**  
DegreeWorks is a web based tool to help students and advisors monitor progress toward degree completion. It is provided for advisement purposes ONLY. It is NOT an official record.  
Only current students in FCRH, FCLC, CBA, GBA, GSS, GRE and GSAS have access to their degree audits.  
Click Here to Login  
DEGREEWORKS - FAQs



# Having Trouble?

- May be a FCRH only course for their core curriculum (Eloquentia Perfecta); can only take English 2000 Eloquentia Perfecta 2 class
- Reserve Closed: Looks open, but may have spots reserved for FCRH students
- May not be eligible due to other reasons (pre-requisites, etc.)
- May have reached your credit limit: **17**
  - If you think you will be registering for more than 17 credits, you must see me **PRIOR** to registration
- Don't wait – register for a different course/section – better to register and drop than not register at all
  - Come to see me for help – if I can help, you can always drop the other class
- If an IT problem, contact the Help Desk at 718-817-3999 or [helpit@fordham.edu](mailto:helpit@fordham.edu)
- You may be “locked out” of registration due to the number of students registering simultaneously; just keep trying
- Some students experience trouble with their computers; consider trying a computer lab
- Make sure **ALL** of your additional credits have transferred **BEFORE** registration
- You may not be able to register for upperlevel (3000+) classes – see me **ASAP** for help



# Still Have Registration Questions?

- Ask now...
- Come see me as a walk-in
  - This afternoon
  - Tomorrow (Friday) afternoon
- Remember, I am **NOT IN THE OFFICE MONDAY, NOVEMBER 11<sup>th</sup>**
- See me on Registration Day, November 12<sup>th</sup>
  - Stop in anytime – only walk-ins all day the 12<sup>th</sup> and the morning of the 13<sup>th</sup>





# Tutoring/Academic Support

- **GSB STUDY CENTER: BUSINESS**
  - Tutoring is provided for Math, Economics, and many other Business courses Monday-Thursday 9am-7pm and Friday 9am-5pm in 207 Hughes Hall. Sign-up on Gabelli Access.
- **THE WRITING CENTER**
  - Tutors address logical, rhetorical, and grammatical concerns in your writing. The Writing Center can assist with any type of writing, from conception, to composition, to completion. Monday through Thursday 9:00 am-8:00 pm; Fridays 10:00am-3:00pm on the East side of Dealy Hall's 5th floor, in the Economics Dept. Students can sign-up at [www.fordham.edu/writingcenter](http://www.fordham.edu/writingcenter) or by phone at 718-817-4032. Walk-ins are welcome whenever space is available. Students should be on time, bring the assignment, and expect to do work.
- **OFFICE OF DISABILITY SERVICES**
  - Accommodations for students with disabilities
  - Academic coaching for all students
- **COUNSELING & PSYCHOLOGICAL SERVICES and CAMPUS MINISTRY**
  - Assistance for students having difficulty adjusting to college
- **PHILOSOPHY**
  - Graduate students in the department can provide tutorial assistance. Students should contact Dr. Samir Haddad, the Associate Chair in Collins Hall 101 for tutorial referrals.
- **ECONOMICS**
  - Students can go to the Economics Tutoring Center in Dealy Hall E-533 or email [ecotutor@fordham.edu](mailto:ecotutor@fordham.edu) for an appointment.
- **MODERN LANGUAGES**
  - Free tutoring, practice, and conversation in all of the languages taught in the department is available. Contact the department for tutoring schedules. The Language Lab in Keating B25 also assists students with Modern Languages.
- **MATHEMATICS**
  - The Math Help Room is located in JMH 410. Math Room Hours: M- F 10:00-4:00. No appointment is necessary.
- **GABELLI DEANS/DIRECTORS**
  - Appointments and walk-ins
- **PROFESSORS**
  - Appointments and office hours



# Academic Policies

- Class Attendance
  - 6 excused for 3x/week
  - 4 excused for 2x/week
  - 2 excused for 1x/week
- University Withdrawals or Leaves of Absence
- Transfer to FCRH or FCLC
  - Must have at least 2.5 GPA
  - FCLC: Dean Joseph Desciak, 804 Lowenstein, [jdesciak@fordham.edu](mailto:jdesciak@fordham.edu)
  - FCRH: Dean Kara Stone, 3<sup>rd</sup> floor Keating, 718-817-4710





# Freshman Advising Calendar

- Included in your handout provided at orientation, on your fall academic schedule (not the week at a glance), and today
- All sessions are MANDATORY
- Look at your schedule to determine your GSB Advising Group
  - On your schedule, you will be registered for a class:
    - FRESHMAN ADVISING/MENTORING - ZZBU ADVI - R13
    - The two numbers after “R” are your Advising Group number
    - Same Advising Group number as your small group on Monday of Orientation

## Fall Advising Sessions:

### Fifth Fall Advising Session

- All sections attend Monday, 11/18
- Keating 1<sup>st</sup> Auditorium

## Spring Advising Sessions:

### First Spring Advising Session

- All sections attend Monday, 1/27
- Keating 1<sup>st</sup> Auditorium

### Second Spring Advising Session

- All sections attend Monday, 2/10
- Keating 1<sup>st</sup> Auditorium

### Third Spring Advising Session

- All sections attend Thursday, 3/6
- Keating 1<sup>st</sup> Auditorium

### Fourth Spring Advising Session

- All sections attend Monday, 4/7
- Keating 1<sup>st</sup> Auditorium



# Featured Upcoming Gabelli Events

- Gabelli Frosh Film Fest
  - *Margin Call* with Finance Professor Fillet; 11/13, 2:30pm, Hughes 212 (room change)
- TrepCon
  - Gabelli School's annual Entrepreneurship Conference
  - Expert speakers, panel discussions, and networking opportunities
  - November 13 all day
  - Students are free
- Global Peace Foundation Young Leaders Conference
  - November 13<sup>th</sup>, 12-2pm, McGinley Ballroom, RSVP via [GabelliConnect.com](http://GabelliConnect.com)
- Dining Etiquette & Fashion Show with Career Services
  - November 13<sup>th</sup>, 6pm, McGinley Ballroom, RSVP via [CareerLink](http://CareerLink)
- See [www.gabelliconnect.com/calendar/](http://www.gabelliconnect.com/calendar/) for more events!



# Discussion with Advising Assistants

Group #	Small Group Room
1	KE 114
2	KE 116
3	KE BSMT B16
4	KE BSMT B19
5	KE BSMT B21
6	KE 104
7	KE 105
8	KE 120
9	KE 204
10	KE 205
11	KE 206
12	KE 208
13	KE 209
14	KE 214
15	KE 215
16	KE 218
17	KE 219
18	KE 312
19	KE 317
20	KE 318
21	KE 319

